

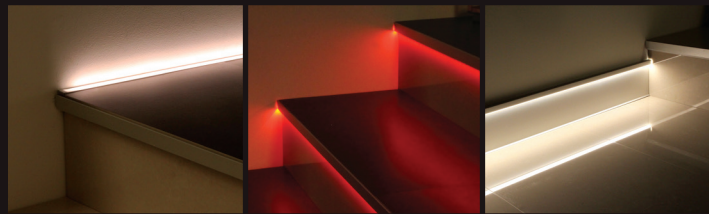


# VISION

Vision offers a range of premium profiles for commercial and domestic applications, designed to protect and inspire with variable mood accents.

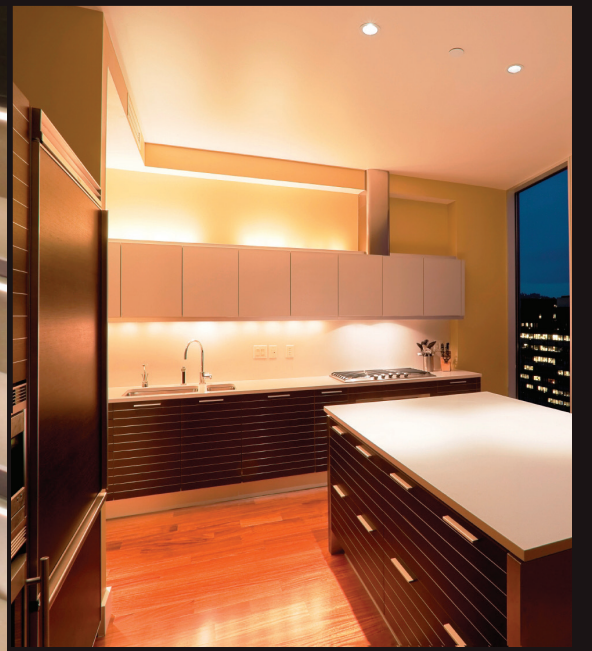
Rated IP65 under IEC standard 60529 - resistant to water splashes from any direction.





The range is specifically designed to accept universal LED systems and RGB for Steps, Listello, Edges and Skirting offering unlimited freedom of design.

Developed with simplicity in mind, the range of supporting hardware offers the most frequently installed systems with Polycarbonate Diffusers that eliminate the hotspots.



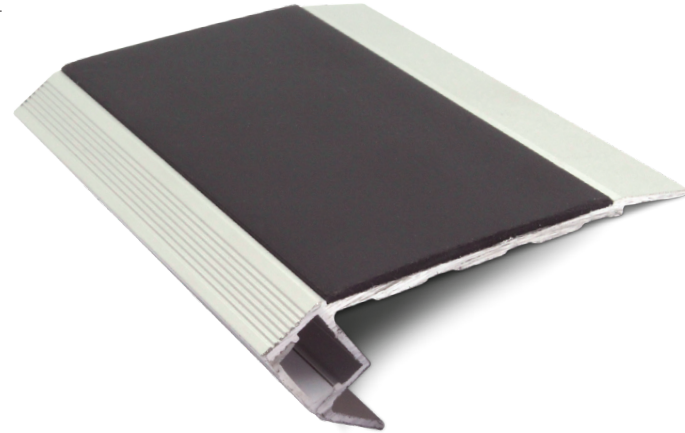
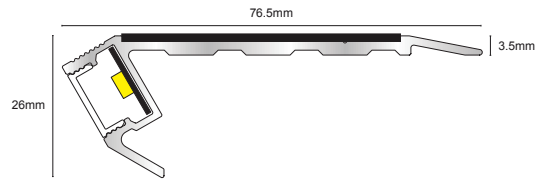
# vision



# Nosing

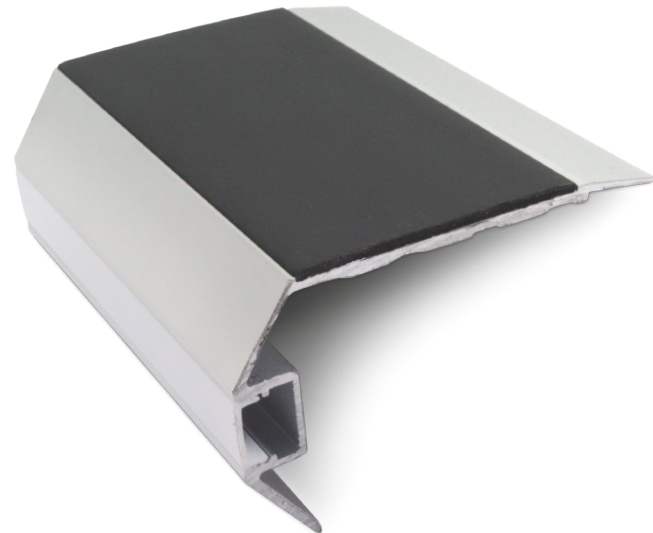
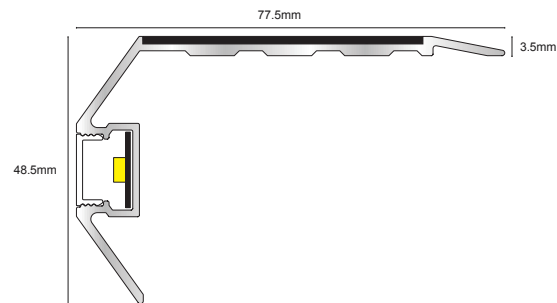
## Nosing: Vision - Light Down (NALR50)

Commercial style stair nosing incorporating a range of non-slip PVC based inserts and Vision LED, CCT and RGB lighting systems in a 'light down' configuration. Supplied in anodised Matt Silver finish, others finishes are available on request. Standard length is 2.8m but we offer a bespoke cutting and drilling service if required and end caps to complete the professional aesthetic. Complete with frosted polycarbonate diffuser to ensure optimum light dispersion.



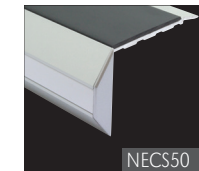
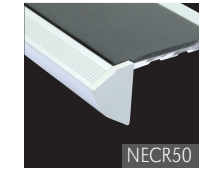
## Nosing: Vision - Light Out (NSLR50)

Commercial style stair nosing incorporating a range of non-slip PVC based inserts and Vision LED, CCT and RGB lighting systems in a 'light out' configuration. Supplied in anodised Matt Silver finish, others finishes are available on request. Standard length is 2.8m but we offer a bespoke cutting and drilling service if required and end caps to complete the professional aesthetic. Complete with frosted polycarbonate diffuser to ensure optimum light dispersion.

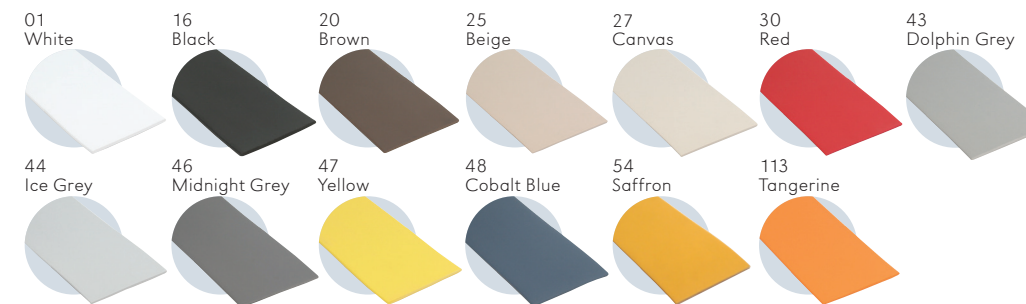


# Available Inserts

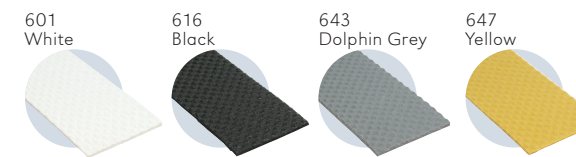
Insert	LRV	NSLR	NALR	LNR
<b>Standard</b>				
01 White	79.9	<input type="checkbox"/>	<input type="checkbox"/>	<input type="checkbox"/>
16 Black	4.5	<input checked="" type="checkbox"/>	<input checked="" type="checkbox"/>	<input checked="" type="checkbox"/>
20 Brown	9.1	<input checked="" type="checkbox"/>	<input checked="" type="checkbox"/>	<input checked="" type="checkbox"/>
25 Beige	41.1	<input checked="" type="checkbox"/>	<input checked="" type="checkbox"/>	<input checked="" type="checkbox"/>
27 Canvas	53.2	<input checked="" type="checkbox"/>	<input checked="" type="checkbox"/>	<input checked="" type="checkbox"/>
30 Red	10.6	<input checked="" type="checkbox"/>	<input checked="" type="checkbox"/>	<input checked="" type="checkbox"/>
43 Dolphin Grey	27.6	<input checked="" type="checkbox"/>	<input checked="" type="checkbox"/>	<input checked="" type="checkbox"/>
44 Ice Grey	42.1	<input checked="" type="checkbox"/>	<input checked="" type="checkbox"/>	<input checked="" type="checkbox"/>
46 Midnight Grey	12.8	<input checked="" type="checkbox"/>	<input checked="" type="checkbox"/>	<input checked="" type="checkbox"/>
47 Yellow	55.7	<input checked="" type="checkbox"/>	<input checked="" type="checkbox"/>	<input checked="" type="checkbox"/>
48 Cobalt Blue	9.2	<input checked="" type="checkbox"/>	<input checked="" type="checkbox"/>	<input checked="" type="checkbox"/>
54 Saffron		<input checked="" type="checkbox"/>		
113 Tangerine		<input checked="" type="checkbox"/>		
<b>Tredsafe®</b>				
601 White	82.7	<input checked="" type="checkbox"/>	<input checked="" type="checkbox"/>	<input checked="" type="checkbox"/>
616 Black	4.8	<input checked="" type="checkbox"/>	<input checked="" type="checkbox"/>	<input checked="" type="checkbox"/>
643 Dolphin Grey	18.2	<input checked="" type="checkbox"/>	<input checked="" type="checkbox"/>	<input checked="" type="checkbox"/>
647 Yellow	46.1	<input checked="" type="checkbox"/>	<input checked="" type="checkbox"/>	<input checked="" type="checkbox"/>
<b>Channel</b>				
81 Matt Silver		<input checked="" type="checkbox"/>	<input checked="" type="checkbox"/>	<input checked="" type="checkbox"/>



## Standard Insert



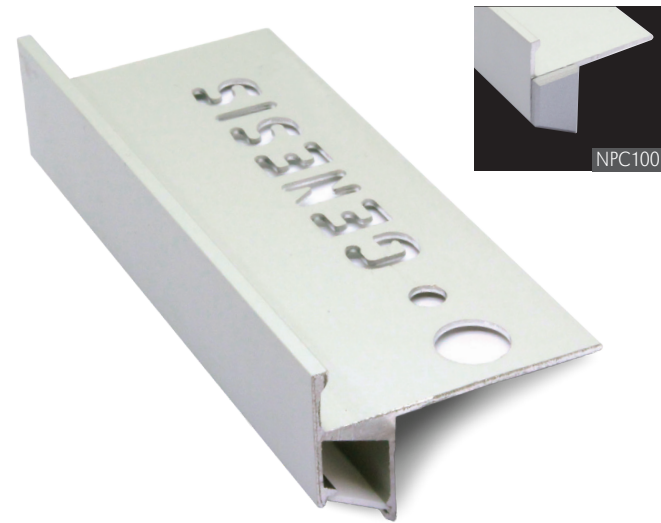
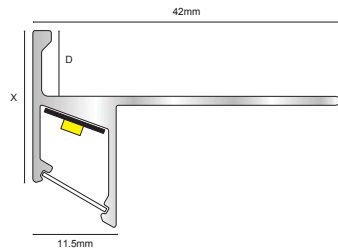
## Tredsafe® Insert



# Step & Corner

## Step Edge: Vision - Step (NLD)

NLD is a tile-in step edge incorporating Vision LED, CCT and RGB lighting systems. Designed to emphasise and accentuate each individual stair, illuminating the riser below to create a stunning stair case. Supplied in anodised Matt Silver finish with frosted polycarbonate diffuser for optimum light dispersion. Available in 9mm or 11mm depths and a standard length of 2.8m. We also offer end caps to complete the professional aesthetic.

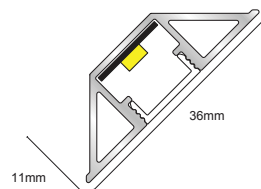


## Corner Self Adhesive

A versatile profile designed for internal corner installations for downlighting or vertical fitting used in conjunction with Vision LED, CCT and RGB lighting systems.

Supplied in anodised Matt Silver finish with frosted polycarbonate diffuser for optimum light dispersion and self-adhesive for easy installation.

Rated IP65 under IEC standard 60529 - resistant to water splashes from any direction.

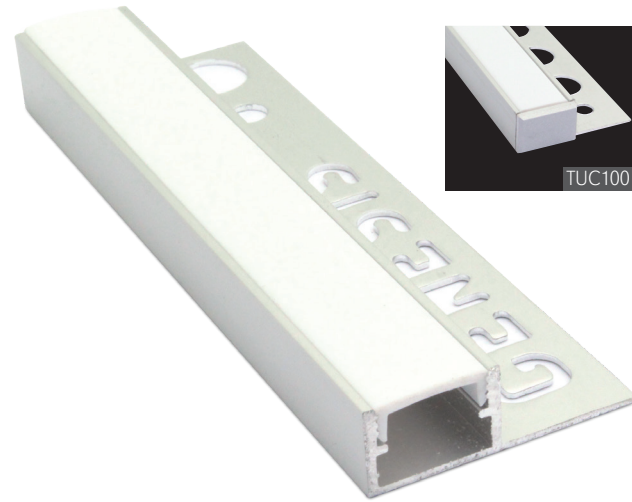
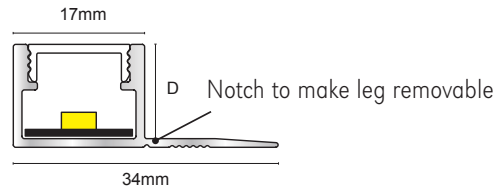




# MultiFix & Guidance

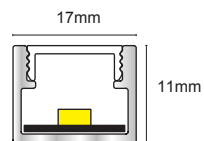
## Wall/Floor: Vision - MultiFix (TLD)

A versatile tile-in profile incorporating Vision LED, CCT and RGB lighting systems. Can be used in wall or floor installations to break up large expanses of tile or create a pathway in the flooring surface. Supplied in anodised Matt Silver finish with frosted polycarbonate diffuser for optimum light dispersion. Available in 10mm or 12mm heights and a standard length of 2.8m. We also offer end caps to complete the professional aesthetic.



## Guidance System (TUD)

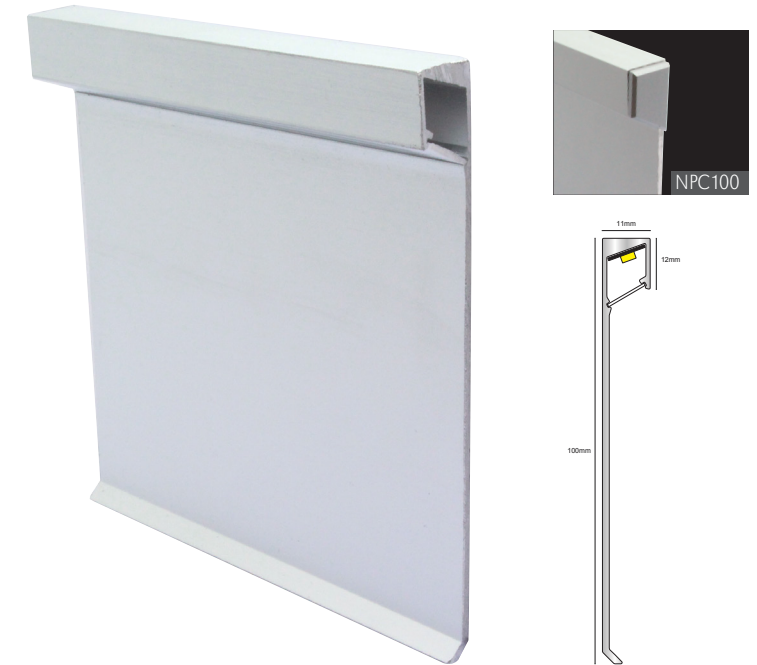
A versatile profile incorporating Vision LED, CCT and RGB lighting systems. Can be used in wall or floor installations to break up large expanses of tile or create a pathway in the flooring surface. Supplied in anodised Matt Silver finish with frosted polycarbonate diffuser for optimum light dispersion. We also offer end caps to complete the professional aesthetics. Rated IP65 under IEC standard 60529 - resistant to water splashes from any direction.



# Skirting

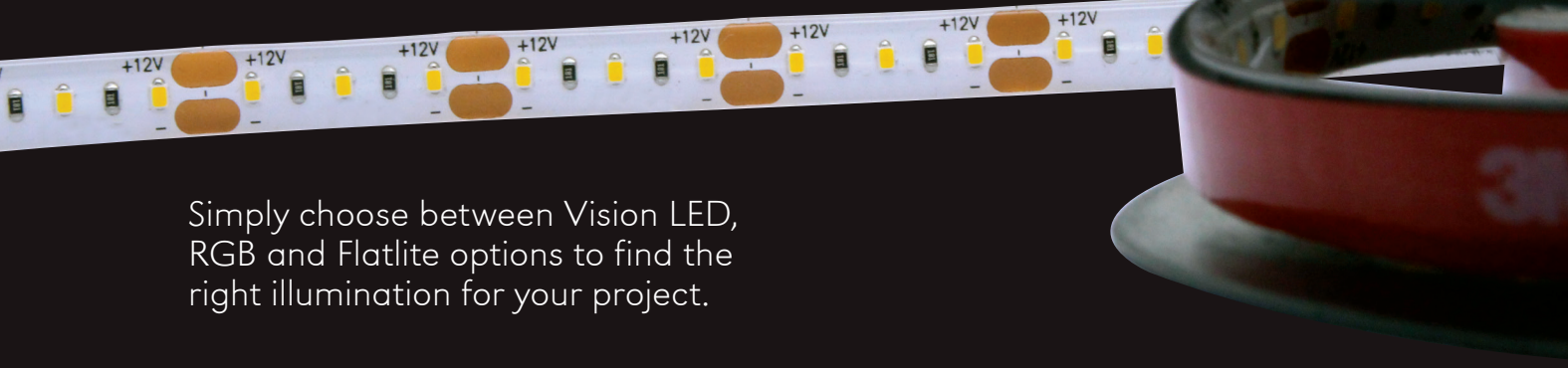
## Skirting: Vision - Skirting (KLD)

A retrofit aluminium skirting profile incorporating Vision LED, CCT and RGB lighting systems. Designed to create a border of low-level light which encapsulates the room. Supplied in anodised Matt Silver and Brushed Silver finishes with frosted polycarbonate diffuser for optimum light dispersion. Available in 100mm height and a standard length of 2.8m. We also offer end caps to complete the professional aesthetic.

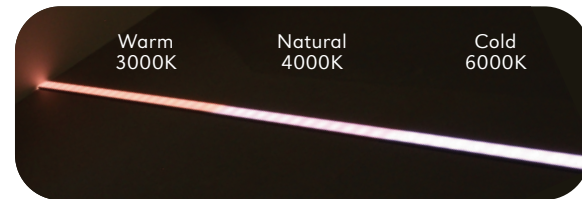




# Lighting Systems



Simply choose between Vision LED, RGB and Flatlite options to find the right illumination for your project.



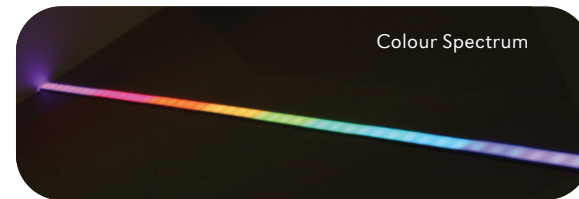
## LED System

Vision offers a range of premium profiles for commercial and domestic applications, designed to protect and inspire with variable mood accents.

The range is specifically designed to accept universal LED systems, RGB and Flatlite for steps, listello, edges and skirting offering unlimited freedom of design.

Developed with simplicity in mind the range of supporting hardware offers the most frequently installed systems with polycarbonate diffusers that eliminate hotspots.

- Efficient 4.8W and 9.6W power options, manufactured to A-A++ energy ratings
- Average lifespan 40,000 hours
- IP65 certified protection
- 120 LED per metre for even light dispersion
- 25mm cutting intervals
- Simple installation
- Single zone

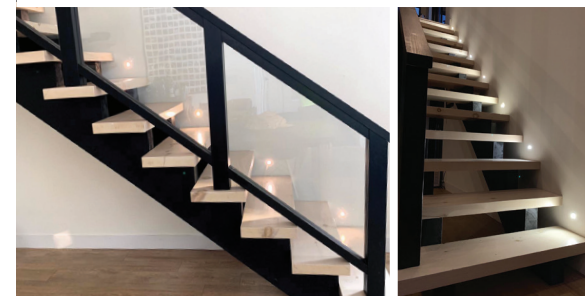


## RGB System

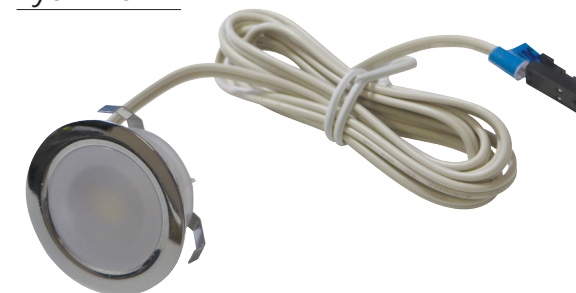
This dynamic system offers a range of mood lighting which allows the user to change colours and dim brightness by remote control in a maximum of 4 zones.

- 14.4W power
- IP65 certified protection
- 60 LED per metre
- Remote control available
- Can produce any colour combination of red, green, blue light
- Also offers three colour temperatures of white light - Cool, Natural and Warm
- Multi-zone

# Accessories

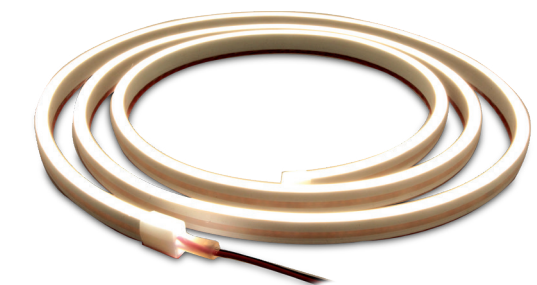


## EyeLEDs



EyeLEDs are an individual, recess mounted LED unit which can be used to accentuate your installation. Compatible with our standard LED drivers and available in 3 colour temperatures - Cool, Natural and Warm White.

## Dotless Flexible LED Tape



- 10w per metre
- Natural White
- 1m, 2m and 3m coils
- Compatible with our standard drivers

A flexible strip of continuous lighting with 144 LED's per metre. Cutting intervals of 21mm with 2m power lead and micro connector.



# Drivers

Selecting the right driver is easy – use the below formula to find the best option for your installation:

$$\text{Total Power (W)} = \text{Length of LED} \times \text{Power Rating of LED (W)}$$

12V Drivers (LED) - Single White



CCT / RGB - Multiple White & Red, Green, Blue



**For example:**

5 metres of Vision 9.6W LED tape uses a total of 48W. This installation will need to use a driver with a rating of at least 50W. The perfect option would be our 50W LED driver LDD50.

## Smart Drivers

Vision Smart LED Drivers can be used to control Vision LED lights using a compatible smart speaker or smart hub. This allows the user to turn the light on and off, adjust brightness and change the colour of the light using their voice or smartphone.

*“Alexa, dim the lights”*



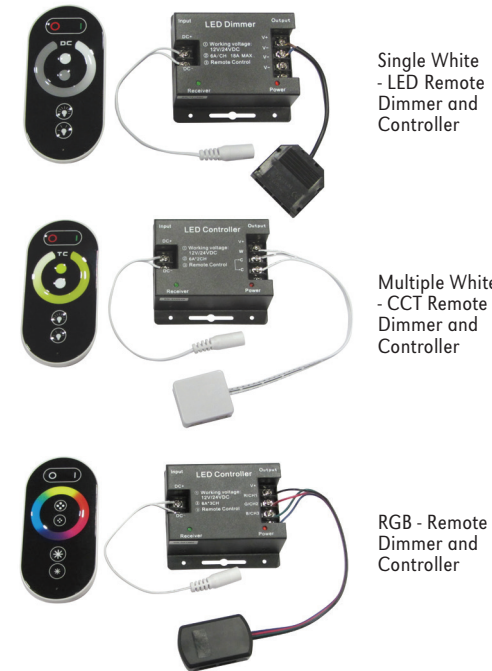
Drivers have six ports, use LEDCON (page 13) to add additional ports (1 x LEDCON = 9 ports, 2 x LEDCON = 12 ports)

# Accessories

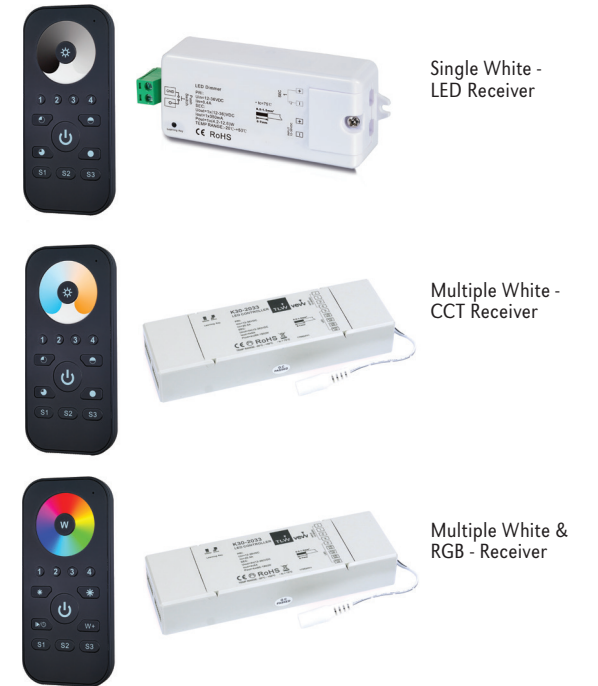
## Remote Control Options

Need more control? Vision RGB is compatible with single and multi-zone remote control, all you need is a receiver and remote control handset.

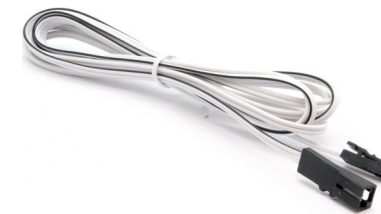
### Single Zone Options (CCT / RGB Driver Compatible)



### Multi Zone Options (4 Zones / 3 Scenes)



## LED 2m Extension

















## Connector Block with 4 Ports





# Overview - What you need

1. Lighting System	2. Driver	3. Receiver (optional)	
		single zone	or multi zone
 <p>NATURAL WHITE 4000K</p>	<p>LED</p> 	N/A	N/A
 <p>NATURAL WHITE 4000K</p>	<p>CCT RGB</p> 		<p>or</p> 
 <p>COLD WHITE 6000K NATURAL WHITE 4000K WARM WHITE 3000K</p>	<p>CCT RGB</p> 		<p>or</p> 
 <p>RED GREEN BLUE</p>	<p>CCT RGB</p> 		<p>or</p> 



Samples Folder available upon request, please email for details

Code	Description
Z432	Vision Samples Folder

# Frequently Asked Questions

**Q: What does LED stand for?**

A: LED stands for Light Emitting Diode.

**Q: What is an IP rating?**

A: IP ratings are an indication of an electrical product's protection against solid objects such as dust and dirt and moisture. IP stands for ingress protection. The IP rating consists of two digits, the first number refers to the product's protection against solids, the second refers to its protection against liquids.

**Q: What is RGB?**

A: RGB simply stands for 'red, green and blue'. An RGB LED product has the ability to combine these three colours to produce over 16 million hues of coloured light.

**Q: Can I cut the LED / RGB strip at any point?**

A: The LED can be cut at 25mm intervals indicated by the copper strips.

**Q: Do you offer a bespoke service and if so what do I need to provide?**

A: Yes we do, just send details of the installation area, quantity of LED required and the effect you are trying to achieve.

**Q: Do you offer alternative voltages?**

A: Yes, our standard drivers work on an input voltage of 200-240v but we can supply 110v rated drivers if required.

**Q: What is the life span of LED?**

A: Our LED strips have an average lifespan of 40,000 hours

**Q: Can I replace my LED lights?**

A: The LEDs have a lifetime of around 40,000 hours. Under normal operating conditions, replacement will not be necessary but is possible if required. Should you need to replace your LED lights we recommend you consult a qualified electrician to perform the modification.

**Q: Do I require an Electrician to complete the installation?**

A: Yes, Wiring is against the law in the UK unless you are a qualified electrician.

**Q: Can I wire the lights to a standard light switch or dimmer switch?**

A: Yes, we recommend you consult a qualified electrician to assist with the installation.

**Q: Can I add more zones of LED at a later date?**

A: Yes, providing you are using a system which is compatible with multi-zone installation (eg. RGB), you can add or amend lighting zones using the remote control handset.

**Q: Can I use my own LED system with the Genesis profiles?**

A: Yes, but we recommend you follow our specification to achieve the optimal results.

**Q: How many ports to the Drivers have**

A: The LED has 6 ports and the CCT / RGB have 4

**Q: I have a single staircase with 20 steps @ 1m of CCT, each driver can only accept 4 LED's due to the number of micro ports so I will need 5 drivers. The catalogue states that it is one receiver per driver but I want this staircase to be all ZONE 1, Can you have 5 receivers all programmed to 1 zone?**

A: Yes, it is one receiver per driver but up to eight receivers can be programmed to the same zone on the same remote as long as you use the multi-zone remote and receivers.

**Q: Is a dedicated power lead required for each driver?**

A: No, multiple drivers can be wired to a single power lead if required, a qualified electrician will be able to advise further.

**Q: Is it possible to increase the number of connector ports supplied with each driver?**

A: Yes, we offer a Connector Block Extension which provides an additional four ports if required, however the extension does occupy one of the existing ports on the driver so this must be taken into account. The power limit of the driver is not affected by this adaptation so wattage restrictions must still be observed.

**Q: What is the specification of the wiring used in your LED system?**

A: The wiring is 2192Y 0.75mm.





VISION